

RES:

- Solar thermal
- PV
- Biogas
- Heat pumps
- Biomass
- Absorption chiller
- Wind
-

Changes in the production and energy supply:

- Process optimisation
- Process intensification
- Heat integration
- Storage
- Energy efficiency
- solar integration
- Biobased products
- Emerging technologies
- Cleaner production
-

Unit operations:

- Cleaning
- Drying
- Evaporation and distillation
- Blanching
- Pasteurization
- Sterilization
- Cooking
- Other process heating
- General process heating
- Heating of production halls
- Cooling of production halls
- Cooling processes
- Melting
- Extraction
- Bleaching
-



Project name: Daily Service Tiefkühllogistik Gesellschaft m.b.H. & Co.KG

Project description:

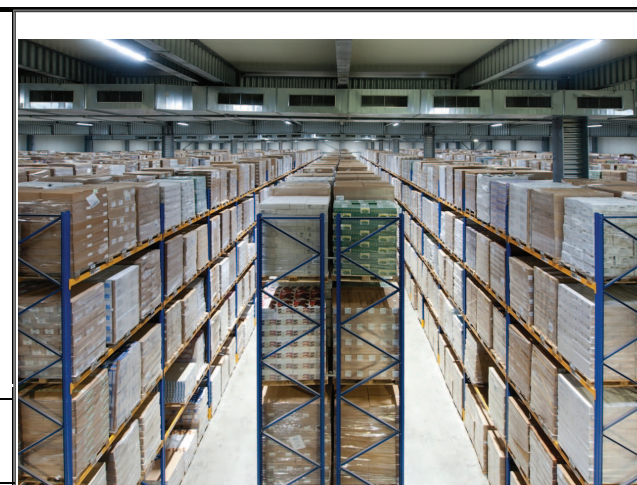
The Daily Service Tiefkühllogistik GmbH & Co KG belongs to the group of companies Vivatis Holding AG. Via Daily service logistics systems, they send its frozen products to the food retail and distribute to large users, without having to invest in logistics infrastructure here. 108 HQI spotlights with 400 watts were replaced by 108 LED with 106 watts. The 666 fluorescent tubes, each with 52 watts were replaced with 25 watts LED. They radiate very little heat and consume less power.

Sector: food & beverages

Sub sector: others, e.g. canned food, ready meals

Country: Austria

Company scale: Large (≥ 250 people and/or ≥ 50 mio€ turnover)



<u>Investigated Company:</u>		<u>product output</u>	tons/a
Daily Service Tiefkühllogistik Gesellschaft m.b.H. & Co.KG		<u>product output</u>	tons/a
		<u>product output</u>	tons/a
		<u>product output</u>	tons/a
		<u>product output</u>	tons/a
<u>Employees:</u>		<u>Turn over:</u>	
<u>Unit operations involved:</u>	<u>Temperature and Energy demand [°C, MWh/a]:</u>	<u>Equipment for heat/cooling generation:</u>	
Cooling of processes	5,700 MWh/a -Lighting demand 7,750 MWh/a - Total Electricity Demand	Electricity for heating and cooling	
<u>Process optimisation:</u>	<u>System optimisation:</u>	<u>Energy supply technology:</u>	
Lighting system replaced with LED	Deep freeze doors are reduced, new airlocks , Inflatable seals and New frozen warehouse with an efficient Ammoniak/CO2 system. The waste heat from this cooling system is used for heating purposes		
<u>Energy saved [%, MWh/a]:</u>	<u>Fossil energy saved [%, MWh/a]:</u>	<u>CO2 emissions saved [%, t/a]:</u>	
702.2	Not specified	Not specified	
<u>Link to further information:</u>	<u>Co-ordinator, realising partner:</u>	<u>Filling in person:</u>	
www.energie-consulting.at	sattler energie consulting gmbh		